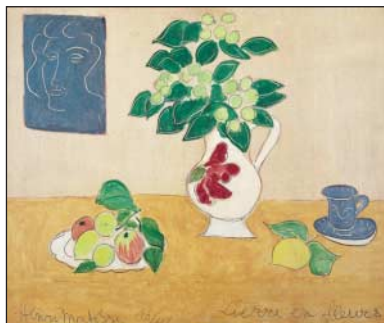


JAMA

The Journal of the American Medical Association



Henri Matisse (1869-1954), *Assiette de fruits et lierre en fleur dans un pot à la rose*, 1941, French.

Letters

Pulmonary Artery Catheter Effectiveness in Congestive Heart Failure 1121

C. WON, W. G. KUSCHNER,
L. W. STEVENSON, C. M. O'CONNOR,
R. M. CALIFF

Dyspnea and Heart Failure in the Emergency Department

A. SCHLEGEL; N. T. AYAS,
C. S. WANG, J. M. FITZGERALD

The Step 2 Clinical Skills Examination

J. A. HALLOCK, D. E. MELNICK,
J. N. THOMPSON; S. G. HENRY

Incidental Adrenal Insufficiency

H. A. TRAN; R. SALVATORI

Placental Weight and Maternal Risk of Breast Cancer

R. S. MURRAY; S. CNATTINGIUS,
A. TORRÅNG, A. ERBOM, F. GRANATH,
G. PETERSSON, M. LAMBE

March 8, 2006

ORIGINAL CONTRIBUTIONS

Fine Particulate Air Pollution and Hospital Admission for Cardiovascular and Respiratory Diseases 1127

F. DOMINICI, R. D. PENG, M. L. BELL, L. PHAM,
A. MCDERMOTT, S. L. ZEGER, J. M. SAMET

Coffee, CYP1A2 Genotype, and Risk of Myocardial Infarction 1135

M. C. CORNELIS, A. EL-SOHEMY, E. K. KABAGAMBE, H. CAMPOS

Effect of a Single Mass Antibiotic Distribution on the Prevalence of Infectious Trachoma 1142

J. D. CHIDAMBARAM, W. ALEMAYEHU, M. MELESE, T. LAKEW, E. YI, J. HOUSE,
V. CEVALLOS, Z. ZHOU, K. MAXEY, D. C. LEE, B. L. SHAPIRO, M. SRINIVASAN,
T. PORCO, J. P. WHITCHER, B. D. GAYNOR, T. M. LIETMAN

BRIEF REPORT

Quality of Reporting of Noninferiority and Equivalence Randomized Trials 1147

A. LE HENANFF, B. GIRAudeau, G. BARON, P. RAVAUD

SPECIAL COMMUNICATIONS

Reporting of Noninferiority and Equivalence Randomized Trials: An Extension of the CONSORT Statement 1152

G. PIAGGIO, D. R. ELBOURNE, D. G. ALTMAN, S. J. POCOCK,
S. J. W. EVANS; FOR THE CONSORT GROUP

JAMA Peer Reviewers in 2005 1175

COMMENTARY

All-or-None Measurement Raises the Bar on Performance 1168

T. NOLAN, D. M. BERWICK

EDITORIALS

Thank You, JAMA Peer Reviewers and Authors 1171

C. D. DEANGELIS, P. B. FONTANAROSA

Lessons From and Cautions About Noninferiority and Equivalence Randomized Trials 1172

P. C. GÖTZSCHE

CLINICIAN'S CORNER

CLINICAL CROSSROADS

A 71-Year-Old Woman Contemplating a Screening Colonoscopy 1161

W. C. TAYLOR

122 Years of
CONTINUOUS
PUBLICATION

EDITOR-IN-CHIEF
Catherine D. DeAngelis, MD, MPH

www.jama.com

(Reprinted) (TABLE OF CONTENTS CONTINUED ON PAGE 1093.) 1091

©2006 American Medical Association. All rights reserved.

JAMA

Humanities

THE COVER 1098

*Assiette de fruits et lierre
en fleur dans un pot à la rose*

M. T. SOUTHGATE

POETRY AND MEDICINE 1103

Muted

J. K. STANGELAND

JAMA 100 YEARS AGO 1196

Business Methods
and Professional Morals

Reader Service

This Week in JAMA 1095

Masthead 1096

Archives Journals Abstracts 1104

Online CME Article 1161

Author in the Room Teleconference 1167

CME Information 1195

Classified Advertising 1197

Journal Advertiser Index 1205

JAMA Contact Information 1207

Instructions for Authors

January 4, 2006

The Key and Critical Objectives of JAMA

January 5, 2005

BOOK AND MEDIA REVIEWS 1190

Solomon Carter Fuller: Where My Caravan Has Rested (Kaplan)

REVIEWED BY C. C. BELL

Silverberg's Principles and Practice of Surgical Pathology and Cytopathology,
vols 1 & 2 (Silverberg et al, eds)

REVIEWED BY S. A. HODA, R. S. HODA

Basic Neurochemistry: Molecular, Cellular and Medical Aspects (Siegel et al, eds)

REVIEWED BY E. E. BENARROCH

Wall and Melzack's Textbook of Pain E-dition (McMahon, Koltzenburg, eds)

REVIEWED BY T. L. STERNBERG

Books and Media Received

JAMA PATIENT PAGE

Colon Cancer Screening 1208

News and Analysis

MEDICAL NEWS & PERSPECTIVES 1107

Avian Flu Researchers Make Strides

Medical Device Oversight Under Scrutiny

Drug Package Inserts Get Mixed Reception

Not All Placebos Are Equal

CAPITOL HEALTH CALL 1112

Bush on Health Care

Bush Agenda Criticized

Pick an Estimate

FROM THE CENTERS FOR DISEASE CONTROL AND PREVENTION 1115

Surveillance for Early Detection of Disease Outbreaks
at an Outdoor Mass Gathering—Virginia, 2005

Two Cases of Toxigenic *Vibrio cholerae* O1 Infection
After Hurricanes Katrina and Rita—Louisiana, October 2005

Editorial Office: (312) 464-2402
fax: (312) 464-5824
jamams@jama-archives.org
Subscriptions: (800) 262-2350
fax: (312) 464-5831
ama-subs@ama-assn.org
Permissions: (312) 464-2513
fax: (312) 464-5843
permissions@ama-assn.org

All articles published, including editorials, letters, and book reviews, represent the opinions of the authors and do not reflect the official policy of the American Medical Association or the institution with which the author is affiliated, unless this is clearly specified.

www.jama.com

©2006 American Medical Association. All rights reserved.

(Reprinted) 1093